

ANNUAL REPORT
GOLDEN ANNIVERSARY EDITION
1965-2015

Lifeworks

A nonprofit serving
people with disabilities



DEAR FRIENDS,

2015 marked an extraordinary milestone for Lifeworks: 50 years of serving our community and people with disabilities as we live and work together.

From our humble beginnings in Dakota County serving eight children with disabilities to the 2,500 individuals that we serve today, Lifeworks has committed the past five decades to providing innovative, person-centered services.

Whether it's partnerships with businesses like Blue Cross and Blue Shield of Minnesota that have endured since the 1980s, longtime fiscal support we've provided to families like the Eiseles, or unique community opportunities like birding, we've made an unmistakable impact throughout the past 50 years.

Lifeworks owes immense gratitude to the generous individuals, foundations, and corporations whose donations have been a driving force behind our success since we first opened our doors in 1965.

We are especially thankful to the members of the Lifeworks Legacy Club whose planned gifts will help ensure that we can serve our community for the next 50 years and beyond!

With heartfelt appreciation,



A handwritten signature in black ink that reads "Judy Lysne".

Judy M. Lysne, MBA
President and CEO



A handwritten signature in black ink that reads "John E.Q. Orner".

John E.Q. Orner
Chair, Lifeworks Board of Directors

1965-2015



Top: Volunteers from Allianz Life Insurance Company of North America hosted a track and field day at Lifeworks.

Bottom Left: Hanratty & Associates hosted its second annual charity golf tournament benefiting Lifeworks.

Bottom Right: Lifeworks band Rock of Ages performed at the 2015 Summer Celebration of Music.

BLUE CROSS AND BLUE SHIELD OF MINNESOTA

BUILDING COMMUNITY

In 1987, Blue Cross and Blue Shield of Minnesota first opened its doors to people with disabilities supported by Lifeworks (formerly Dakota, Inc.), employing six individuals to take care of some essential day-to-day tasks.

When the initial group had success, employees at Blue Cross jumped at the chance to employ more Lifeworks associates, conducting an analysis of their organization and urging managers to find additional tasks that would be well-suited to their abilities.

One of those managers was Nora Brower, who today serves as senior director of benefit management operations.

“I was introduced to Dakota, Inc. when my area was training, so I had the team where we trained the folks who were going to do claims, operations, and membership,”

Brower said.

By 1988, the number of Lifeworks associates employed at Blue Cross had jumped to 24, to the mutual benefit of both organizations.

“In the 1980s we didn’t have nearly as much technology as we do today, so there was lots of labor that we were dealing with,” Brower said. “For years I had [Lifeworks associates] working for me.”

The individuals working with Brower worked hard putting together training manuals, organizing and three-hole punching them, and putting on labels.

“My trainers were so thankful that they did not have to put those together,” Brower said. “It really made a big difference to get everybody organized and to save time.”

Brower said she feels fortunate that she works for an organization that values giving back in the community the way that Blue Cross does.

“I have been at Blue Cross for 40 years,” Brower said. “I’ve loved every minute of it. It’s been a good company. What I absolutely love is the mission and vision and values of Blue Cross and how they support the community and organizations like Lifeworks.”

Although the work has changed over the past 30 years, Blue Cross has remained a dedicated employer of Lifeworks associates. As a Presenting Sponsor of the Lifeworks Golden Anniversary Celebration in 2015, they have reinforced their commitment to ensuring that people of all abilities can live happy lives in the community.



Lifeworks associates have been an integral part of Blue Cross and Blue Shield of Minnesota since the 1980s.

Nora Brower (fourth from right) and fellow employees from Blue Cross and Blue Shield of Minnesota volunteered at the Lifeworks Summer Celebration of Music.



985

Thank you to everyone who has helped us on this incredible 50-year journey. With your support, we are excited to begin our next 50 years of serving our community and people with disabilities.

1965

Lifeworks is founded by seven families in Dakota County.

1966

The organization is officially incorporated as "Dakota County Day Activities Center, Inc."

1971

Lifeworks creates the first home visiting program for infants with disabilities in the state of Minnesota.

1984

The organization begins to serve individuals year-round.

1985

Lifeworks begins developing expertise in supported employment.

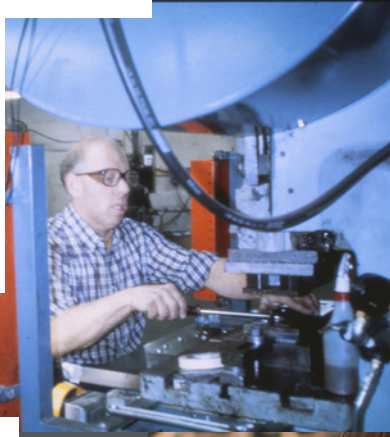


50

1965-2015

1993

The organization adopts a model of values-based decision making. Its decisions are to be ethical, respectful, responsive, and resourceful.



2000

In response to requests from families, case managers, and school staff members, Lifeworks begins serving the Mankato community.



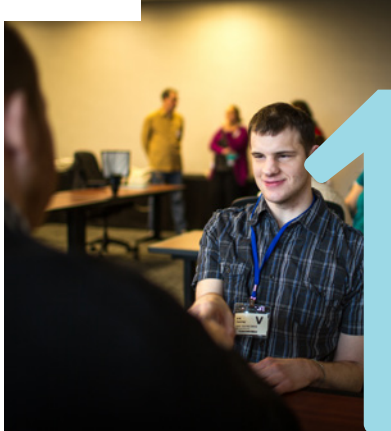
2000

Lifeworks begins providing fiscal support to families.



2000

A group of human services professionals from Denmark visit Lifeworks to learn about supported employment, leading to an international expansion of the Lifeworks employment model.



1986



1965-2015



Left: Monica Eisele and her son Adam have been supported by Lifeworks since 2008.

Above: Adam Eisele, who benefits from the PCA Choice program with help from Lifeworks, enjoys sitting out on his balcony playing music.

When Monica Eisele first came to Lifeworks in 2008, her son Adam was just 10 years old.

At the time, she told us she wanted a personal care assistant who could be Adam's mentor, friend, and male role model, so she decided to utilize the Lifeworks PCA Choice program after it was recommended to her by another mother.

"We're still with PCA Choice [in 2015], and that's probably my favorite part is that we can pick our own PCAs," Monica said.

Through this program, Monica has hired several PCAs throughout the years, who, until last summer, all happened to be female. Although she says that all of his previous PCAs were excellent, there is

a special bond between Adam and his current PCA, Kevin Patton, that she has always wanted for her son.

"The part that I love the most is the mentorship that he's getting," Monica said. "He always had girl PCAs, which were all wonderful and amazing, but we sought out finding a male mentor for him. We won the lottery when we got Kevin, and I've just noticed a change in Adam."

In his preteen years, Adam was big into drumming, competing in the Special Olympics, and socializing. Today, his interests have evolved like those of any teenager. Instead of drums, he has picked up guitar as his main form of musical expression.

"You pay for drum lessons, so they

switch to guitar," Monica said with a laugh. "I guess he thinks girls like guitar players better."

While he still competes in Special Olympics, he has scaled back his participation as other interests and social opportunities have arisen thanks to his relationship with Patton.

"Kevin will say, 'hey, there's a basketball game at my school,' so he rides in the car with other teenage boys and goes to a game and does stuff that a typical 16-year-old would do, and that's huge for what it's done for him and all of us," Monica said.

Thanks to the support of Lifeworks through PCA Choice, Adam now has the mentor and friend that his mother always wanted for him.

EMPOWERED BY SUPPORT

THE EISELE FAMILY

LIFEWORKS HASTINGS AND CORNELL

CELEBRATE URBAN BIRDS



When Lifeworks Hastings received a grant in 2010 to participate in the Cornell Lab of Ornithology’s “Celebrate Urban Birds” project, it was a shock. After all, when the grant was first submitted in January 2010, no one at Lifeworks had any experience with birding at all – and there were more than 680 applicants nationwide for a project being facilitated by an Ivy League institution!

Enter Kevin Smith, local bird expert and retiree from the City of Hastings Parks and Recreation department. A longtime advocate for Lifeworks associates who work for the City of Hastings and a member of the Minnesota Ornithologists’ Union, Smith was a natural fit to educate the newly formed group on the world of birding.

“He has been such an inspiration,” said Lifeworks Service Facilitator Jodi Iverson, who has also been a leader of the birding group since its formation.

So, what exactly is the “Celebrate Urban Birds” project all about?

“Citizen science, that’s what it’s called,” Smith said. “To collect the data on a regular basis and to turn it in so that others can use it.”

The data collected by the Hastings birding group can be used in many ways, like tracking things such as habitat or a fluctuation in the number of birds in an area. When combined with the information collected by other similar groups throughout the world, it can give ornithologists the ability to make predictions or identify potential causes

of concern for birds and their natural environment.

“Everybody should be proud of themselves for all of the work that they’re doing on a global scale,” Smith said. “We talk about habitat and how birds are really keyed in to the habitat because that habitat is where they get their food, their water, their shelter, and their nesting spots.”

In 2015, the Lifeworks birding group partnered with the Hastings Veterans Home, creating connections to the community that are an added benefit of a project that also helps participants stay active, improve their knowledge about birds and the environment, and build relationships with their peers.

Left: Participants in the Lifeworks Hastings birding group often use binoculars to spot birds from a distance.

Right: In 2015, Lifeworks invited guests from the Hastings Veterans Home to join them on birding observations.

2010



2003

Multi-sensory environments open at Lifeworks. These specially-designed settings help people with autism, sensory processing difficulties, or other challenging conditions integrate their senses so they are able to focus, learn, and interact with those around them.



2005

Lifeworks celebrates 20 years of partnership with the Dakota County Government Center – the first organization to work with us to employ people with disabilities.



2009

Lifeworks staff members present at the World Congress for Social Educators in Denmark.



2010

The organization forms the AT Real-Time Band, a group composed entirely of individuals who use assistive technology.



50

1965-2015



1965-2015

MILESTONE EMPLOYMENT ANNIVERSARIES

Lifeworks extends its gratitude and appreciation to the following employers who celebrated milestone anniversaries in 2015.

30 YEARS

Dakota County Government Center

25 YEARS

Cub Foods - Burnsville
General Mills

20 YEARS

Cargill

15 YEARS

ABM Janitorial -
MSP International Airport
Best Western Hotel & Restaurant
Bro-tex, Inc.
Lunds & Byerlys - Edina
PreferredOne

10 YEARS

Apple Automatic
Chartwells - Breck School
Coughlan Companies
Culver's of North Mankato
Exceed Packaging
Kowalski's - Parkview
Paragon Printing & Mailing
Sears - Burnsville Center
Sodexo - South View Middle School
Taher Dining - US Postal Service
YMCA Hastings

5 YEARS

Buffalo Wild Wings - Mankato
Creative Confectionaire
Gap - Southdale
Nortech Systems
Pepsi-Cola of Mankato
Red Robin - Apple Valley
Rother Machine

NEW EMPLOYERS

3M - New Ulm
Blue Chip 2000
Burger King
C & C Special Products
Dave and Buster's
Goodwill
LongTerm Care Group
Mankato City Center Hotel
Mayo Clinic Health System-Mankato
Microtel Inn & Suites
Paul Davis Restoration
Sodexo - General Mills Bassett Creek
St. Luke's Episcopal Church
Trader Joe's
Vention Medical

2015 EMPLOYERS

Lifeworks recognizes and thanks the many businesses in our community who partnered with us to provide employment opportunities for individuals with disabilities in 2015.

3M - New Ulm
ABM Janitorial - Hamline University
ABM Janitorial -
MSP International Airport
AirServ
Allegis Group Services at Allianz
Allianz Life Insurance Company of North
America
AM 950, The Progressive Voice of
Minnesota
Ameriprise Financial - New Business
Operations
Apple Automatic
Aramark - 3M
Aramark - TCF Bank Stadium
Aramark Janitorial - General Mills
Arc's Value Village - Bloomington
Arc's Value Village - Richfield
Atomic Data
B.Stark & Co
Banana Republic - Rosedale
Bayer
Bell Mortgage Company
Berkley Risk Administrators Company
Best Buy - Corporate Headquarters
Best Buy Apple Valley #245
Best Buy Mankato #330
Best Western Hotel
BIC Graphic
Blue Chip 2000
Blue Cross and Blue Shield of Minnesota
Boston Market - Roseville
Buffalo Wild Wings
Buffalo Wild Wings - Mankato
Burger King
Burger King Store #6299
C & C Special Products
Caldrea
Capella University
Capstone Publishing
CaptionMax, Inc.
Cargill - Corporate Headquarters
Cargill Animal Nutrition

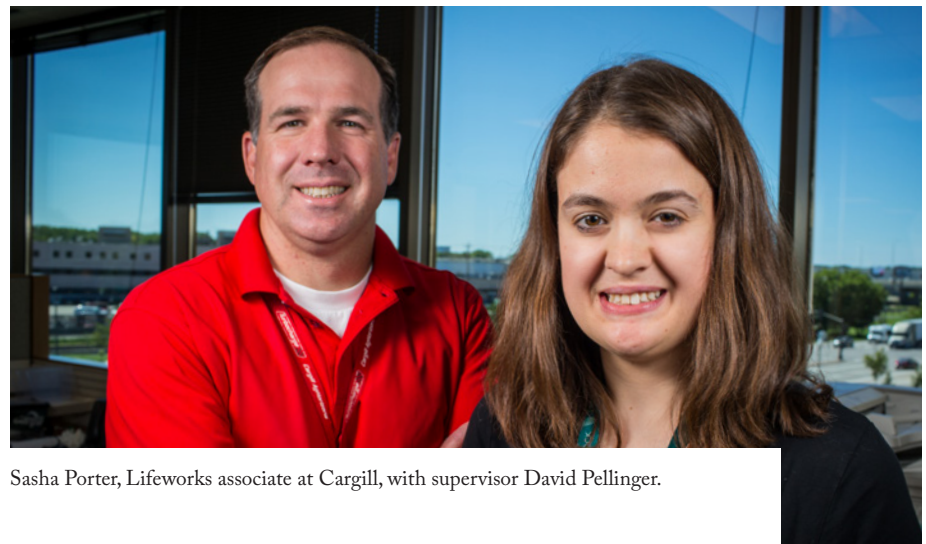
Caribou Coffee -
MSP International Airport
Chartwells - Breck School
Chartwells - Edina School
Christopher & Banks Distribution Center
City of Eagan Parks & Recreation Dept.
City of Hastings
City of Mankato Parks Department
City of Minneapolis
City of Saint Paul - Police Department
City of Saint Peter
Coborn's - Hastings
ConvergeOne
Convergys
Coughlan Companies
Creative Kidstuff
Creative Water Solutions
Cub Foods - Burnsville - Co. Rd 42
Cub Foods - Burnsville - Hwy 13
Cub Foods - Cottage Grove
Cub Foods - Hastings
Cub Foods - Maple Grove
Cub Foods - New Brighton
Cub Foods - Plymouth - Nathan Ln
Cub Foods - Plymouth - Vicksburg Ln
Culver's
Culver's of North Mankato
Custom Safety Solutions
Dakota County Government Center -
Hastings
Dart Transit Company
Dave and Buster's
Best Western Hotel & Restaurant
Dollar Tree
Ecolab - Allan L. Schuman Campus
Ecolab, Inc.
Ecumen Seasons at Apple Valley
Eide Bailly LLP
Exceed Packaging, Inc
Ferdinand F. Peters Esq. Law Firm
First Transit
FlexMation, Inc.
Foley & Mansfield
G2 Secure Staff

Gap
Gap - Nicollet Mall
Gap - Ridgedale
Gap - Southdale
Gap - MOA
General Mills - James Ford Bell Technical
Center
Gillette Lifetime Specialty Healthcare
GLS - St. Paul
Godfather's Pizza - Burnsville
Gold Star Transportation
Goodwill
Goodwill Easter Seals
Greyhound Lines, Inc.
Group O Supply Chain Solutions
Guzman Law Firm, P.A.
Habilitative Services, Inc
Hang 10, LLC
Harry Meyerling Center
Herberger's - Mankato
Hewitt Lifts & Roll-A-Dock
HMS Host
The Home Depot - Plymouth
The Home Depot - St. Louis Park
Home Goods
Hy-Vee - Adams St.
Hy-Vee - Faribault
Hy-Vee - New Hope
Hy-Vee - New Ulm
Hy-Vee - Oakdale
Hy-Vee - Riverfront Dr.
InboxDollars
Innovative Office Solutions
Inver Grove Heights Parks & Recreation
Jeane Thorne
Jerry's Foods - Eden Prairie
JMLM Restaurants, Inc.
J's Restaurant & Pizza Parlor
Keepers RV Center
Key Surgical
Kowalski's - Parkview
Kwik Trip
Kwik Trip - Minnesota Ave
Kwik Trip - Raintree

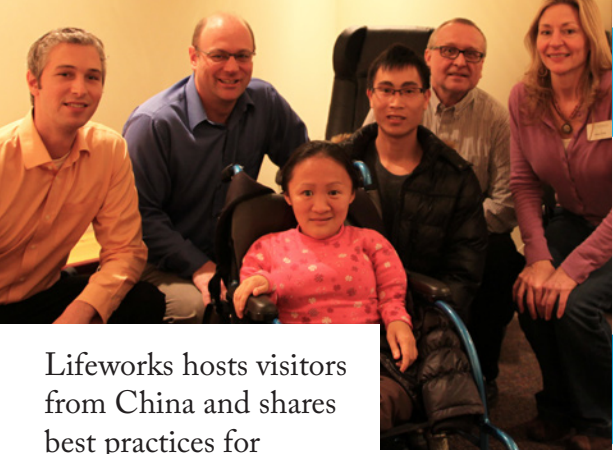
Kwik Trip - S. Broadway
 Life Time Fitness - Bloomington North
 Life Time Fitness - Champlin
 Life Time Fitness - Plymouth
 Lifeworks - Administrative Office
 Lifeworks Services, Inc. - Brooklyn Park
 Lindquist & Vennum
 Lindsay Window & Door
 LongTerm Care Group
 Lowe's - Mankato
 Lunds & Byerlys - Chanhassen
 Lunds & Byerlys - Edina
 Lunds & Byerlys - Maple Grove
 Lunds & Byerlys - Minnetonka
 Lunds & Byerlys - Plymouth
 Lunds & Byerlys - Wayzata
 Lunds & Byerlys - Woodbury
 Macy's
 Mankato City Center Hotel
 Mapleton Community Home
 Math Advantage
 Mayo Clinic Health System - Mankato
 McCormick Computer Resale, Inc.
 McDonald's - Apple Valley
 McDonald's - Mankato
 McDonald's - Maple Grove
 McDonald's - Woodbury
 Messerli & Kramer, P.A.
 Metro Endodontics
 Metro Urology
 Metropolitan Supply
 Microtel Inn & Suites
 Midwest Sign & Screen Printing Supply Co.
 Minneapolis Airport Marriott
 Minnesota Children's Museum
 Mister HotShine
 Nalco Company
 Nortech Systems, Inc.
 NuAire
 Oak Terrace Assisted Living
 Oce Business Services, Inc./Ameriprise
 Financial Services
 Olive Garden
 OUTFRONT Media
 Panera Bread - Mankato
 Paragon Printing & Mailing, Inc.
 Paul Davis Restoration
 Peace Coffee
 Pear Tree
 Pepsi-Cola of Mankato, Inc.
 PERMAC Industries
 Petco - Apple Valley
 Pizza Ranch - Le Sueur
 Portico Benefit Services
 PowerObjects
 PreferredOne
 Prime Therapeutics
 Prime Therapeutics Eagan
 Prime Therapeutics Edina
 PrimeFlight Aviation Services

Prudential Financial, Inc.
 Rapid Packaging
 Red Robin - Apple Valley
 REI
 Renewal by Andersen
 Rother Machine
 Savers
 Scantron Corporation
 Sears - Burnsville Center
 Sears - Mall of America
 Securian Financial Group, Inc.
 Service Management Group
 SevenHills Partners Inc.
 Sherry Gray
 Sodexo - Edina Schools
 Sodexo - General Mills Bassett Creek
 Sodexo - General Mills JFBTC
 Sodexo - Minnesota State University
 Sodexo - MSP
 Sodexo - Securian
 Staples - Minnetonka
 Starkey Hearing Technologies
 Starkey Hearing Technologies -
 World Headquarters
 Stratasys
 Stratasys - Applications Engineering
 Stratasys - Shipping Warehouse - Pondview
 SuperTarget - Plymouth
 Taher Dining - Providence Academy
 Taher Dining - US Postal Service
 Target Store - Cottage Grove
 Target Store - Minneapolis
 TBEI Inc.
 The Demo Group
 The Salvation Army
 The Travelers Companies, Inc.
 The Wine Company
 Thomson Reuters
 Transit Team, Inc.
 UCare
 Ultimate Fleet Repair
 Unitron

Valspar Corporation
 Vention Medical
 Volt Services Group - 3M
 Walgreens - Maple Grove
 Wal-Mart - Burnsville
 Wal-Mart - Apple Valley
 Wal-Mart - Cottage Grove
 Wal-Mart - Eagan
 Wal-Mart - Inver Grove Heights
 Wal-Mart - Maple Grove
 Wal-Mart - Shakopee
 Wal-Mart - Woodbury
 Wal-Mart - Bloomington
 Wal-Mart - Lakeville
 Water's Edge
 Wells Fargo - Shareowner Services
 Wells Fargo Securities
 Wholesale Produce Supply
 WOW! Zone Family Entertainment Center
 Xcel Energy - Maple Grove Materials
 Complex
 Xcel Energy - NSPM
 Xigent Solutions LLC
 YMCA Hastings
 YMCA West St. Paul

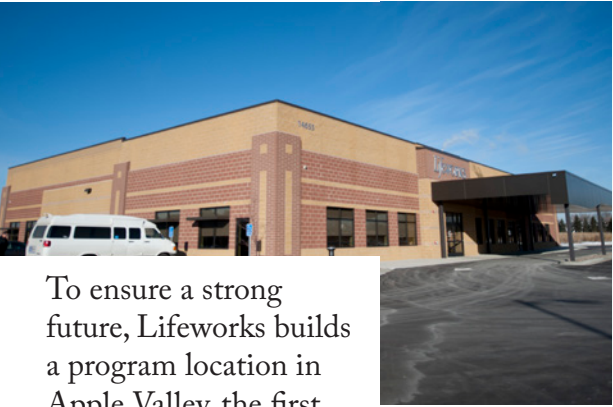


Sasha Porter, Lifeworks associate at Cargill, with supervisor David Pellinger.



Lifeworks hosts visitors from China and shares best practices for educating children with disabilities.

2012



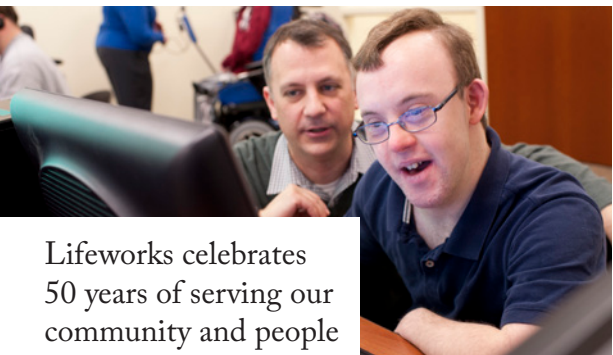
To ensure a strong future, Lifeworks builds a program location in Apple Valley, the first to be owned by the organization.

2012



The organization lays the groundwork for a new small group career development program designed to help job seekers obtain individual employment more quickly.

2015



Lifeworks celebrates 50 years of serving our community and people with disabilities as we live and work together!

2015



Lifeworks job seeker Niko Winjum.

2011

1965-2015



Lifeworks staff members and job seekers visit Circus Juventas.

With the future of employment services for people with disabilities in mind, Lifeworks staff members spent the better part of 2015 developing a new Small Group Career Development program.

While traditional career development programs feature large groups and take place in secluded locations, Lifeworks Small Group Career Development is a highly individualized experience that engages participants in career exploration in the heart of a community business.

In addition to meeting in groups of five, job seekers will have regular access to individual career counseling to help them find a job within nine months of beginning the program.

Small Group Career Development

consists of three distinct phases: Employment Exploration, Employment Development, and Employment Support.

During the exploration phase, job seekers will gain exposure to different career possibilities and make an informed choice about employment. Next, through the development phase, they will create a personal employment plan to help them get started on their career path. Finally, once job seekers have obtained employment, they will receive initial support from Lifeworks to get started on the job and ongoing assistance to grow in their career.

The first pilot group will launch in early January 2016 in downtown St. Paul, and several other sites will begin programming throughout the year.

In the early stages of the program, job

seekers will focus on identifying themes and patterns in their interests and skills. Participants will talk about careers with a park ranger, a volunteer manager, a community engagement administrator, a warehouse manager, and people employed in the service industry, among various other individuals.

Through other activities, including job shadowing, tours, trials, resume development, and informational interviews, job seekers will be highly engaged in their search for employment in the community.

Our sincerest thank you to F.R. Bigelow Foundation, Otto Bremer Trust, Wells Fargo Foundation, David and Wendy Kunz, Sharon and Mark Zauhar, and others for their generous contributions to this program.

1-2015

LOOKING TOWARD THE FUTURE

SMALL GROUP CAREER DEVELOPMENT



LEGACY DONORS

The following donors have named Lifeworks as a beneficiary in their wills, life insurance policies, retirement accounts, or trust arrangements as of December 31, 2015.

Patricia Brunier
Gordon & Kay Buyse
David Colwell
Michael & Patricia Houston
Earl & Beverly Johnson
George & Sharon Moudry
Robert & Ann Niedringhaus
Rebecca O'Connor
Bruce & Merry Jo Parker

Robert & Pamela Platz
Walter & Mary Jo Roberts*
William Rottschaefter, Jr.
Suzanne & Paul Shute*
Valerie Takemori
Donald & Joanne Varey
Gail Willox
Albert & Kathleen Woodward*

When you make a planned gift to Lifeworks, you are not only making a tremendous impact on the people with disabilities that we serve today, but ensuring that we can continue to provide opportunities for a lifetime to people with disabilities for years to come.

If you're interested in learning more about securing your legacy through a planned gift to Lifeworks, contact Suzanne Shute at sshute@lifeworks.org or 651-365-3743.

Above: Members of the Lifeworks Bloomington choir at the Summer Celebration of Music.

**New Lifeworks Legacy Club members in 2015*

2015 BY THE NUMBERS

EMPLOYMENT

840

Lifeworks associates worked nearly

460,000

hours at **298** community businesses and earned over

\$3,950,000.

TRANSPORTATION

31 vehicles provided approximately **1,300**

rides each day to our clients and traveled a total of

433,057 miles.

NEW CAREERS

173 new individuals were successfully placed in community jobs.

PARTNERSHIPS

43 new businesses partnered with Lifeworks to employ people with disabilities.

VOLUNTEERISM

593 volunteers provided **7,515** hours of service.



Left: Lifeworks celebrated 15 years of supporting the Mankato community in 2015 while Nikki Dengler (front) also celebrated her 15th anniversary with us.

Right: Staff members from Uponor volunteered their time at Lifeworks Apple Valley.

1965-2015

2015 FINANCIALS

STATEMENT OF FINANCIAL POSITION

Year Ended December 31

2015

2014

ASSETS

Cash and Investments	\$11,227,293	\$10,563,290
Accounts Receivable and Other	4,648,381	4,788,236
Property and Equipment Net of Accumulated Depreciation	5,298,535	5,330,928

Total Assets	21,174,209	20,682,454
---------------------	-------------------	-------------------

LIABILITIES AND NET ASSETS

Liabilities

Notes Payable	2,015,987	2,113,432
Accounts Payable	276,549	381,468
Accrued Salaries and Related Expenses	2,257,979	3,146,804
Other Accrued Expenses	7,675	3,148
Other Liabilities	453,201	467,814
Total Liabilities	5,011,391	6,112,666

Net Assets

Total Unrestricted Designated Net Assets	3,282,548	3,217,496
Total Unrestricted Undesignated Net Assets	12,535,942	11,214,912
Temporarily restricted	344,328	137,380

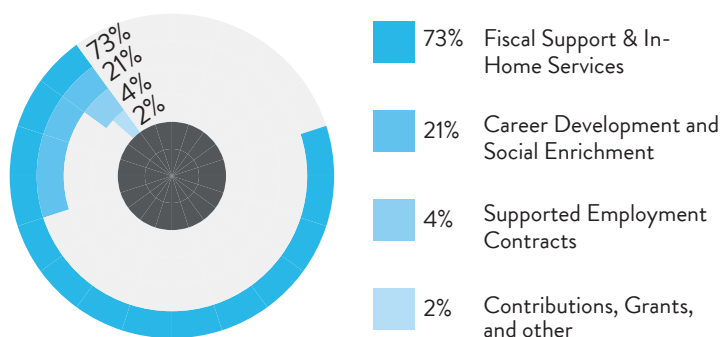
Total Net Assets	16,162,818	14,569,788
-------------------------	-------------------	-------------------

Total Liabilities and Net Assets	\$21,174,209	\$20,682,454
---	---------------------	---------------------

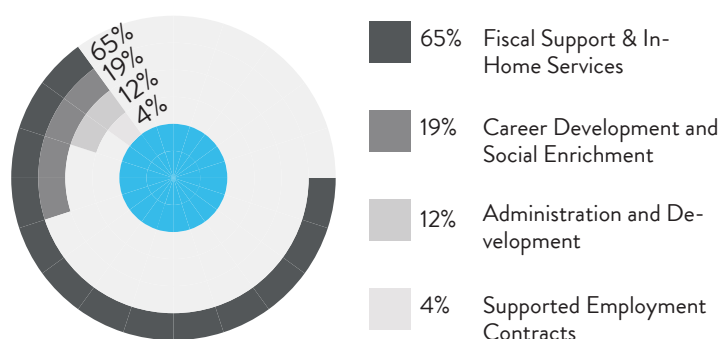
STATEMENT OF ACTIVITIES

Year Ended December 31	2015	2014
SUPPORT AND REVENUE		
Fiscal Support & In-Home Services	\$44,749,088	\$43,302,770
Career Development and Social Enrichment	12,746,723	12,956,954
Employment contracts	2,691,747	2,814,640
Contributions and grants	996,432	810,136
Other	(105,125)	480,551
Total Support and Revenue	61,078,865	60,365,051
EXPENSES		
Fiscal Support & In-Home Services	38,696,711	38,498,802
Career Development and Social Enrichment	11,128,339	10,379,558
Employment contracts	2,520,866	2,691,352
Administration	6,843,120	5,796,300
Development	296,799	285,022
Total Expenses	59,485,835	57,651,034
Change in Net Assets	1,593,030	2,714,017
Net Assets, Beginning of Year	14,569,788	11,855,772
Net Assets, End of Year	\$16,162,818	\$14,569,788

2015 REVENUE SOURCES



2015 EXPENSE SOURCES



2015 CONTRIBUTORS

Thank you to the following foundations, businesses, and individuals who made contributions to Lifeworks in 2015. It is because of your investment that we are able to fund the innovative and progressive programs that Lifeworks offers. Your support makes a profound difference in the lives of those we serve.

LEADERSHIP CIRCLE MEMBERS

(Donations of \$500 or more)

*2015 giving totals reflect received donations as well as contributions secured through multi-year pledges.

FOUNDATIONS

\$35,000 to \$60,000

Ecolab Foundation

\$15,000 to \$35,000

Fred C. and Katherine B. Andersen Foundation

Otto Bremer Trust

Securian

Wells Fargo Foundation Minnesota

\$5,000 to \$10,000

Andersen Corporate Foundation

The Bieber Family Foundation

Consolidated Communications

Community Fund

G & K Services Foundation

Pieschel Family Foundation Fund of

Minnesota Community Foundation

The Prudential Foundation

Rusty & Mary Jane Poepl Foundation

\$1,000 to \$5,000

Gray Plant Mooty Foundation

The Joseph Durda Foundation

The Pentair Foundation

\$500 to \$1,000

Medtronic Foundation

Nelson/Rodgers Family Fund

BUSINESSES

\$160,000

Minnesota Department of Transportation

\$105,000

Atomic Data

\$30,000 to \$60,000

Ameriprise Financial - Corporate Giving

Blue Cross and Blue Shield of Minnesota

IBM - Smarter Workforce

\$20,000 to \$30,000

Allianz Life Insurance Company of North America

Hanratty & Associates

Horton Holding, Inc.

\$10,000 to \$15,000

Christopher & Banks Distribution Center

PowerObjects

The Show Syndicate

Thomson Reuters

Wells Fargo Securities

\$5,000 to \$10,000

Bayer

Dart Transit Company

Key Surgical

Minnesota Bank and Trust

Prime Therapeutics

Prudential

TCI Business Capital

United Way of Hastings

\$1,000 to \$5,000

Alliant Consulting

American Durable

Ameriprise Financial Gift Matching

Program

Andersen Corporation

Boyer & Associates

Burnsville Rotary Foundation

CaptionMax

Cargill

ConvergeOne

Creative Water Solutions

Custom Visual Services

DeWitt Mackall Crouse & Moore S.C.

Eide Bailly

First Impression Group

Fourscore Resource Capital

InboxDollars

KAISERComm,

Knights of Columbus - Father Carey

Knights of Columbus - Marian

Massachusetts Mutual Life Insurance

Company

Meagher & Geer, P.L.L.P

Messerli & Kramer, P.A.

Microsoft Matching Gifts Program

MinnPost

Peace Coffee

Proto Labs

RJ Ryan Construction

Rotary Club of Eagan

Securian Financial Group

Solution Design Group

UCare

Ultimate Fleet Repair

Uponor

\$500 to \$1000

Common Sense Building Services

Cornell University

Crystal D

Ecolab

Gopher State Fire Equipment

Gray Plant Mooty

Innovative Office Solutions

Kiwanis

Knights of Columbus

Knights of Columbus - St. Gerard

Kuyppers Consulting

MBA Connect

Modern Molding

INDIVIDUALS

\$15,000 to \$20,000

Thomas & Gwen Ryan
James & Amy Wolford

\$10,000 to \$15,000

John Abbott & Michele Williams-Abbott
William & Joan Gacki
Gail Willox

\$5,000 to \$10,000

Michael & Patricia Houston
Arthur & Dorothy Janota
Chuck & Mary Jungmann
David & Wendy Kunz
Catherine Mahone
Bruce & Merry Jo Parker
Lawrence & Maria Patterson
Sharon & Mark Zauhar

\$2,500 to \$5,000

Amy & Ted Carlson
Mark Abbott
Richard Allendorf
David & Gretchen Bonham
Gordon & Kay Buyse
Daren & Sarah Cotter
Michael Finn
Mark & Denise Geldernick
Christopher & Veria Huerta
Emmy Mastel
Robert & Ann Niedringhaus
John & Kathleen Orner
Scott Peterson & Christine Larsen
Judy Lysne & Alex Petterson
Walter & Mary Jo Roberts
James & Mary Sheehan
Mark Snyder
Albert & Kathleen Woodward

\$1,000 to \$2,500

Caryn Addante
G. Barry & Louise Anderson
Mark Anderson & Sysliene Turpin
David & Mary Andreasen
Leigh Bailey
Barbara & Michael Baumann
Beth Bird
Richard & Lynn Bisanz
Kathleen Brockmeier
Ryan & Lindsay Brown
Kofi Bruce & Amy Christensen-Bruce
Russell & Caroline Buys
Ken Carney
Glen Chambers & Lisa Sarafolean
John & Debbie Cobb
Stephen Daas
Jonathan d'Albortis
Cordell Dietz
Richard & Patti Dougherty



Kayleigh Reemer, Lifeworks associate at Culver's in North Mankato.

Michael DuBois
Patrick & Karen Dwyer
Ester Fesler
Keith & Joan Folkert
Andrew & Michelle Fraley
Bernard & Damaris Friel
Mark & Carrie Gamm
Joseph & Jayna Heinemann
Cindy & John Hitt
Kenneth & Linda Holmen
James & Ellen Hubbell
Richard & Cathleen Jaeger
Steven & Marie Jorissen
Mark & Lisa Kroskin
Robert & Carla Lane
John Lang
Kent W. Larson & Christine M. Podas-Larson
Gene & Doris Larson
Michael & Mary Lenertz
John & Virginia McCain
Zachary & Karen Meyer
Peter & Lynda Michielutti
George & Sharon Moudry
Jeffrey Mueller
Bonnie Murphy
Robert & Joanne Neis
Nathan Noll
Dan & Joy O'Bresky
Marc Olson
Dan & Laura Purfeerst
William Rottschaefer
Tony J. Saputo-Swanson
Mary Schaffer
Fred & Alice Seagren
Suzanne & Paul Shute
Dave Swaggert
Diane Wells

\$500 to \$1,000

Wade & Jennifer Anderson
Mary Anderson
Sarah Baumgartner
Sally S. Bean
Chris Becker

David Beltman
Loreen Blood
Eugene & Nancy Booker
Patricia Brunier
Robert Castle
Kathy Clough
Laverne & Barbara Dunsmore
Brian & Kim Emerson
Tracy Gardner
Vicki Gerrits
Lawrence Grab
Helen Graham Davies
Bill & Heather Gray
Angela Hanson
Duane & Susan Harves
Thomas & Laurie Healy
William & Darlene Jenison
Jasmine Jirele
Wyn & Myrtle John
Brenda Johnson
Robert & Irene Johnson
Don & Wendy Johnson
Tim & Michelle Jourdan
Christopher & Erin Judson
Richard & Linda Kehneman
Jerome & Kristi Klukas
Michael & Ann Lichty
Pat Lillehei
Lawrence Loomis
Paul Markwardt
Laura & James McCaul
Neal & Elizabeth McMahan
Ramaiah & Vimala Muthyala
Deanne Miller & Patrick O'Brien
Dan O'Connor
Benjamin & Kimmy Olson
Robert & Pamela Platz
Linda Rabagliati & Reginald Gettings
Marie Rutz
Jan Sanner
Robert Schlicksup
Ginger Sisco
James & Janice Smith
Mark & Terry Steege
Ted & Wendy Storlie

Julie Trabant
Susan Trunk
Donald & Joanne Varey
Donald & Shirley Volbrecht
Andrew & Kathryn Wetzel
Terry Williams & Christine
Severns-Williams
Matthew & Mary Woestehoff
Georgia Woitas

ANNUAL FUND DONORS

BUSINESSES

\$200 to \$500

ABM Janitorial -
MSP International Airport
Best Buy - Corporate Headquarters
City of Mankato
Dakota Supply Group
Direct Benefits, Inc.
Herberger's - Mankato
Kettle River Consulting, Inc.
Knights of Columbus 1600
Knights of Columbus (Church of
Risen Savior)
Knights of Columbus, Lakeville
Minnesota Valley Exchange Club
Rivertown Lions Club of Hastings
TBEI
The Saint Paul Hotel
YMCA Mankato

Up to \$200

Best Western Hotel
Buffalo Wild Wings - Mankato
Campus Coiffures
Clancy's Fire Extinguishers Sales & Svc
Culver's of North Mankato
Dakota Electric Association
Hy-Vee - Adams St
Kwik Trip - Raintree
Liberty Diversified Industries
McDonald's
MoonDogs Charities, Inc.
Spiral Natural Foods
Vermillion State Bank
WOW! Zone Family Entertainment Center

INDIVIDUALS

\$250 to \$500

Al & Connie Anderson
Charles & Camille Burin
Wanda Cantin
Anthony Carlson
Timothy & Jessica Carlson
Chuck & Terry Chism

Robert Doppelhammer &
Elizabeth Holmberg
Thomas & Elizabeth Egan
Scott Evangelist &
Melanie Proth-Evangelist
Wendy Folkert
Salena & Jeffrey Gallo
Marge Goldberg
Matthew Gray
Timothy & Rebecca Grosshuesch
Gary & Karen Grundy
David & Sharon Hall
Gene Han & Jamie Ehlert
Evelyn Hannegraf
Joseph & Pamela Harris
Michael Hartman
Dawn Heller-Telford
Evan & Kit Henspeter
Mary Hexom
Kristin Hynes
Ralph Jelinski
Frank & Cindy Kerr
Michael Khan
Carol Kovala
Jeffrey & Nancy Kovala
Susan Laurent
Dustin & Tricia Lee
Steven Levey
Jeffrey Magnuson
Brennan & Peg Malanaphy
Beverly Marlow
Larry & Patricia Matson
Troy & Amanda Mattick
Joel & Patti McColl
Kevin & Lynne Megan
Earl & Shirley Mellema
Robert & Rosemary Meyers
John & Janice Moberg
Brad & Kimberly Mueller
Umit Nasifoglu
Janis Negratti-Samuel
Russell & Tammy Nelson
Rebecca O'Connor
Steven & Sue Olson
Tim & Maria O'Phelan
Robert Parkhill & Dennice Briol
Richard & Robin Perket
Diane Pozdolski
Lynne Rasmussen
Carolyn Roby
Antonio & Marci Rodriguez
Gary & Joan Rosett
Bryan Ross
Jim Rutzick
Eddie & Lindsey Rymer
Lynne Smith
Chris Solheid
Jamie Tozzi
Jennifer Vock
Corey & Janeen Walther

E.J. & Barb Wang
Victor & Karen Wells
Peter & Nancy White

\$100 to \$250

Ruth Abbott
James Abbott
Nicholas Abbott
George & Regine Adam
Theophilus Adegbile
Gary & Donna Anderson
Alan & Cheryl Anderson
Emily & Tracy Anderson
Bruce & Cheryl Artmann
David & Sue Astin
Harry Balley
Tom & Bonnie Barnes
Dean Barton
Julie Baskerville
Ron & Ann Baumbach
Jerry Beiers
Allan & Sheryl Benning
Jerry & Carol Benson
Lee & Norma Jean Bentz
Noreen Bishop
Peter & Cindi Boynton
Karen Brady
David Brauer & Sarah Duniway
Alan & Gretchen Bray
Mark & Jenny Bretheim
Maria Bujak
Kurt Burdick & Denise Jaeger
Lyn Burton
April Buterbaugh
Kevin & Beth Cairns
Matt & Erin Clark
Dominick Colasanti
David Colwell
Laurel Corey
David Cossi
John Crowley
Myron & Frances Danielson
Kimberly Dean
David Debbins
Dennis & Delores Deppa
Joyce DeVries
James & Margaret Dilley
Angela Doering
Robert & Trish Eibert
Dennis & Jean Eich
Dan Elhalawani
Diane Feldman
Robert & Cynthia Finke
Mr. & Mrs. Donald Finnerty
John & Mary Fischer
Dennis & Catherine Flanagan
Ronald & Marilyn Freberg
Bill & Colleen Fritsch
David & Cynthia Furda
Christopher Gallo
Jim & Kathy Geary

(continues on page 23)

CONSECUTIVE DONORS

INDIVIDUALS

Emily & Tracy Anderson
Lee & Norma Jean Bentz
David Blaney & Sherry Gray
Loreen Blood
Barbara Blumer
Eugene & Nancy Booker
Irene Budin
April Buterbaugh
Gordon & Kay Buyse
Thomas & Martha Christensen
David Colwell
Jeanne Crowe
Michael Finn
Mr. & Mrs. Donald Finnerty
Bernard & Damaris Friel
David & Cynthia Furda
William & Joan Gacki
Salena & Jeffrey Gallo
Vicki Gerrits
John & Dorothy Gockowski
Jean Grossman
Stephen & Jean Guenther
Evelyn Hannegraf
Michael & Patricia Houston
Christopher & Veria Huerta
Ralph Jelinski
Wyn & Myrtle John
Frank & Cindy Kerr
Martin & Greta Kiener
Leonard & Jacqueline Klockeman
Carol Kovala
Harlan & Gloria Kremer
David & Wendy Kunz

Robert & Carla Lane
Kathryn A. Lawler
Michael & Mary Lenertz
Michael & Ann Lichty
Pat Lillehei
Daniel & Darlene Lingofelt
Lawrence Loomis
Susan Luke
William Martineau
John & Virginia McCain
Laura & James McCaul
Earl & Shirley Mellema
Robert & Rosemary Meyers
George & Sharon Moudry
Ramaiah & Vimala Muthyala
Robert & Joanne Neis
Robert & Ann Niedringhaus
Robert & Denise Olson
John & Kathleen Orner
Tim & Renee Ostberg
Scott & Diane Pap
Bruce & Merry Jo Parker
Curt Peterson
Scott Peterson & Christine Larsen
Judy Lysne & Alex Petterson
Robert & Pamela Platz
Dan & Laura Purfeerst
Walter & Mary Jo Roberts
Marie Rutz
Corinne Shepherd
Suzanne & Paul Shute
Sharon Sly-Durante
James & Janice Smith
Donald & Joanne Varey

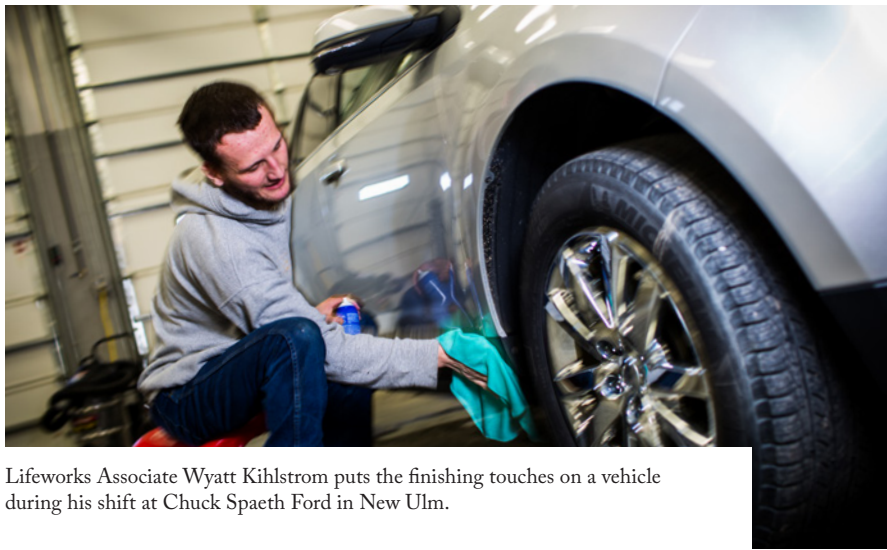
Donald & Shirley Volbrecht
James & Mary Ann White
Peter & Nancy White
Gail Willox
Susan Winterfeld Thompson
Albert & Kathleen Woodward
Sharon & Mark Zauhar

BUSINESSES & FOUNDATIONS

American Durable, Inc.
Blue Cross and Blue Shield of
Minnesota
ConvergeOne
DeWitt Mackall Crouse &
Moore S.C.
Ecolab Foundation
Knights of Columbus 1600
Knights of Columbus 5199
Knights of Columbus Father Carey
Council No. 5569
Pieschel Family Foundation Fund
of Minnesota Community
Foundation
Securian
The Bieber Family Foundation
Thomson Reuters
UCare
United Way of Hastings
Wells Fargo Securities

In recognition of their loyal support, Lifeworks extends its sincere gratitude to the following individuals and organizations that have made a contribution each and every year for 10 or more consecutive years.

1965-2015



Lifeworks Associate Wyatt Kihlstrom puts the finishing touches on a vehicle during his shift at Chuck Spaeth Ford in New Ulm.

Jesse & Tammy Geiken
 Lin Gisselquist
 Lisa Gordenier
 John & Chris Goring
 David Blaney & Sherry Gray
 Amy Greening
 Jean Grossman
 Marla Haley
 Justin Hanratty
 Tamara Hardenburgh
 Barton Harvey
 Todd & Jennifer Hauschildt
 Tim & Carol Hearn
 Rachel Herder
 Donald & Patricia Hewitt
 Kate Ryan Reiling & Kevin Hinckley
 Richard Hinz
 Kay Hoffman
 David Hottinger & Mary Kaul-Hottinger
 Christine Isaacs
 Lori Johnson
 Tatiana Keene
 Martin & Greta Kiener
 Ron & Cathy Kirchner
 Thomas & Ann Klein
 Leonard & Jacqualine Klockeman
 Harlan & Gloria Kremer
 Lisa Kreye
 Dan & Elizabeth Krueger
 Kerry Kubacki
 Brittmari Labissoniere
 Justin & Andrea Lang
 Kathryn A. Lawler
 Linda Lowry
 Susan Luke
 Robert Lundquist
 Jennifer Madson
 William Martineau
 Daniel & Lynn McWhorter
 Jeffrey Messerich
 Truck Morrison
 James Murray
 Raymond & Aili Nelson
 Brent & Karen Nelson
 Marmion Nelson

Kris Nelson
 Kent & Stephanie Newburg
 Robert Noebel
 Alan & Jeanne Nordstrom
 Sean O'Farrell
 Tim Olsen
 Robert & Denise Olson
 Scott & Diane Pap
 Frank & Patricia Pavlik
 David Pellingier
 Timothy & Patricia Peterson
 Curt Peterson
 Nathan Pommeranz
 Rob Presthus & Pam Opland
 Marlys Pritchard
 Lori Reff
 Steven & Laura Ricker
 Michele Roepke
 Nicholas Rogers
 Joyce Rosenthal
 Leroy Rother
 Chelsie Sabart
 Sarah Sanfilippo
 Mike & Sara Santi
 Violet Scheibel
 Donna Schneider
 David & Joan Schultz
 Theresa Schulz
 Colleen Schweiss
 Jason & Lisa Sem
 Corinne Shepherd
 Larry & Barbara Sly
 Michael Sorg
 Sherm Stanchfield
 Mary Beth Stearns
 Kelly Stowell
 John & Susan Teska
 Charles & Leslie Thiele
 Dick & Pam Thorsen
 Colleen Tollefson
 Kathleen Vella
 Hannah Wagner
 Jeff Wedren & Janna Frabont
 Karen Wells
 Brian Westrich &

Susan McCreary Westrich
 Stephen & Carol Wexler
 James & Mary Ann White
 Susan Winterfeld Thompson
 Daniel Wordsworth & Sandra Partridge
 Robert & Carl Woxland

Up to \$100

Cedar & Jason Abadie
 Karen Albro
 Sandi Alexander
 Dorothy Alibrando
 Bonny Anderson
 Theodore & Evelyn Anderson
 Peter Beagan & Sally Miller Beagan
 Lloni & Alan Bebel
 Brad Beckman
 Barbara Blumer
 Mike & Lois Bohanon
 Clare Boyer
 Anton & Marlys Brendalen
 Patricia Brennan
 John & Betty Bruender
 Irene Budin
 David & Joanne Buerke
 Gregory & Marilyn Buhta
 Russell Burnison
 Sarah Burns
 Don & Lisa Burns
 Russell & Beth Buyse
 Jeanne Chilton
 Thomas & Martha Christensen
 Kelly & Kelly Coleman
 Rebecca Condon
 James Coons
 Jeanne Crowe
 Barbara Dacy
 Max & Suzanne Duckler
 Sarah Edlund
 Patrick Eisele
 Lily & Henry Eisele
 Karen Finke
 Lisa Fritsch
 Leroy & Marie Gertgen
 Emily Giannobile
 John & Dorothy Gockowski
 Richard & Janie Goodspeed
 Paul Gordenier
 Deborah Green
 James Grotjohn
 Stephen & Jean Guenther
 Amy Gunderson
 Deana Gunderson
 Thomas & Monica Hammersten
 Lisa Hart
 Bruce & Linda Henning
 Nicholas Henning
 Eugene & Kathleen Henrickson
 Victoria Heun
 Susan Hilden
 Cindy Holmsten

Steven & Susan Horejsi
 Paul & Brenda Irvin
 Daryl & Angie Jensen
 Gerald & Barbara Kavan
 Ruth Keenan
 Robert Klein
 Gina Kressin-Hacker
 Terrance & Judith LaBissoniere
 Abby E. Larson
 Susan Lasoff
 Allan & Iris Lindbeck
 Deborah Lindsey
 Daniel & Darlene Lingofelt
 Mary Jean Loomis
 Tracy Luiso
 Monica Lundquist
 Brian & Michelle Luther
 Gregory & Kathy Malecha
 Edward & Judith Malecki
 Julie Manworren
 Ryan Matson
 Regina McNearney
 Robert Miles
 Beth Monsrud
 Kerry Moore
 Darlene Motschenbacher
 Marietta Murphy
 Deborah Nelson
 William Nelson & Jane Weis
 Linda Nelson
 Chris Niesen
 Jean Nordstrom
 Kyle Ornick
 Tim & Renee Ostberg
 Craig Parker
 Kara Phelps
 Steve & Sonja Ramsey
 Kristin Ries
 Robin & Bernadette Schendel
 Ervin Schoppe
 Herman & Mary Schulte
 Lisbeth Schwarz
 Simon Schwob
 Chelsea Skinner
 Sharon Sly-Durante
 Cynthia Smith
 Donald & Karen Smith
 Gary & Susan Soule
 Roland Spadino
 Nicole Sutter
 Robert & Barbara Thamert
 John & Arlene Thomas
 Mari Taffe & Kurt Thompson
 Daniel & Patricia Tillman
 Elizabeth Trinkle
 Marvin Trulsen
 Mary Jo Tucker
 Kenneth & Sharon Vagts
 Jeanne Vahlasing
 Daniel & Kay Van Lanen
 Joellyn Veninga

Carol Walter
 Sally Waterman
 Ryan & Melissa Weston
 Stephen White
 Scott Whitman
 Jill Wirtanen
 John Woodward
 Andrei & Erin Zolotukhin-Ridgway

IN-KIND DONATIONS

BUSINESSES

Best Western Hotel
 Buffalo Wild Wings - Mankato
 Campus Coiffures
 CaptionMax, Inc.
 Clancy's Fire Extinguishers Sales & Svc
 Crystal D
 Culver's of North Mankato
 Custom Visual Services
 Ecolab, Inc.
 First Impression Group
 Gopher State Fire Equipment, Inc.
 Herberger's - Mankato
 Hy-Vee - Adams St
 IBM - Smarter Workforce
 Innovative Office Solutions
 Kettle River Consulting, Inc.
 Kwik Trip - Raintree
 McDonalds
 Minnesota Bank and Trust
 MinnPost
 Peace Coffee
 TBEI
 The Saint Paul Hotel
 The Show Syndicate
 Thomson Reuters
 YMCA Mankato

INDIVIDUALS

Julie Baskerville
 John & Debbie Cobb
 Ester Fesler
 Jim & Kathy Geary
 Christopher & Veria Huerta
 Michael & Mary Lenertz
 Brad & Kimberly Mueller
 John & Joni Palen
 Judy Lysne & Alex Petterson
 Robert & Pamela Platz
 Dan & Laura Purfeerst
 Tony J. Saputo-Swanson
 Mary Schaffer
 Fred & Alice Seagren

GIFTS IN MEMORY

Felicia Adegbile
 Theophilus Adegbile

Steve Bickel
 Judy Lysne & Alex Petterson

Terry & Mike Brennan
 Patricia Brennan

David Brenneman
 Gordon & Kay Buyse
 Russell & Caroline Buyse

Ann Brey
 Colleen Schweiss

Marna Burton
 Barbara Dacy
 Bruce & Linda Henning
 Nicholas Henning
 Michael & Mary Lenertz
 Kent & Stephanie Newburg



Lifeworks Board Member Cathy Mahone greets a job seeker during a professionalism series class hosted by Allianz Life.



Andrew Wilmes, Lifeworks associate at Herberger's in Mankato.

Lorraine Coons
James Coons

Ada George
Gervae Anderson

*In honor of Lee Gordenier and in memory of
Catherine Gordenier*
Lisa Gordenier

Wanda (Lyn) Goring
John Goring

*Nolan Anderson's grandparents (Trig and
Doris Helleloid)*
G. Barry & Louise Anderson

*Ruth and Frank Hutton and their son,
Merrill*
Myron & Frances Danielson

Beverly Klockeman
Leonard & Jacqueline Klockeman

James E Lawler
Kathryn A. Lawler

Dorothy M. McLaughlin
Dorothy Alibrando

James Lundquist
Deana Gunderson
Michael & Patricia Houston
Michael & Mary Lenertz
Liberty Diversified Industries
Monica Lundquist
Robert Lundquist
NuAire, Inc.
Judy Lysne & Alex Petterson
Amy Schmit

Reverend Lawrence E. Martin
Laurel Corey
Stephen & Shirley Maytan

Joseph Mazur
Gail Willox

Scott Mellema
Jeffrey Magnuson
Earl & Shirley Mellema

Cory Newberg
Loreen Blood

Jeffrey O'Connor
Kathleen Brockmeier
Rebecca O'Connor

Abbey Rother
Sandi Alexander

Sarah & Jana
Gene & Doris Larson

Jim Sundboom
Kathy Clough

Joyce Marie Thamert
Robert & Barbara Thamert

Kathy Wells
Victor & Karen Wells

Elvira Woxland
Robert Woxland

Hunter & Connor Albro
Karen Albro

Nickolas Bohanon
Mike & Lois Bohanon

Gabe Bonham
David & Gretchen Bonham

Anne Booker
Bonnie Murphy

Lynette Budin
Irene Budin

Sarah Burns
Jerry Beiers

Marna Burton
Lyn Burton

Gordon & Kay Buyse
Russell & Beth Buyse

Katie Cohen
The Joseph Durda Foundation

The employees of Dart
Paul & Brenda Irvin

Mark DuBois
Michael DuBois

Mark Dubois & Best Buy
Andrew & Michelle Fraley

Mr & Mrs Pat Dwyer
Jamie Tozzi

Robert Eich
Dennis & Jean Eich

In honor of Jeff Gallo
Christopher Gallo
Kerry Kubacki
Tracy Luiso
Kerry Moore
Chris Niesen

Pat Gallo
Salena & Jeffrey Gallo

Vicki Gerrits
Thomas & Monica Hammersten

*In honor of Lee Gordenier and in memory of
Catherine Gordenier*
Lisa Gordenier

Elsie Grosshuesch
Timothy & Rebecca Grosshuesch

David Harves
Duane & Susan Harves

David Hearn
Tim & Carol Hearn

Rebecca Henrickson
Eugene & Kathleen Henrickson

GIFTS IN HONOR

Elaine Howe
Diane Feldman

Douglas Kirchner
Ron & Cathy Kirchner

Gene Larson's 85th birthday
Gene & Doris Larson

Katy & Dick Lauber's 50th wedding anniversary
Mary Jean Loomis

Nolan Lauber (grandson)
Mary Jean Loomis

Sarah Lawler
Kathryn A. Lawler

Partnerships with Living Well Disability Svcs
Julie Manworren

Brenda Loomis
Mary Jean Loomis

James Lundquist
Liberty Diversified Industries

Sarah Ruth Stanchfield Lundquist
Sherm Stanchfield

The Mankato staff, clients, and parents who volunteered at the MN Air Spectacular
City of Mankato

James McColl
Joel & Patti McColl

Beth McWhorter
Daniel & Lynn McWhorter

John M. Miller
Peter Beagan & Sally Miller Beagan

Lynn Morreim
Daniel & Patricia Tillman

Cullan Nelson
Mary Jo Tucker

Kath Pengelly
Bill & Colleen Fritsch
Mary Jean Loomis

Sherri Peterson
John & Arlene Thomas

Dornece Quiel
Jerry & Carol Benson

Heather Schendel
Robin & Bernadette Schendel

Clare Schmid & Jeff DeBo's Marriage
Susan Hilden

Terry Sly
Sharon Sly-Durante

Cynthia I Smith
Donald & Karen Smith

Tony and the team
Salena & Jeffrey Gallo

Kathy Vella
David & Sue Astin

Susan Volbrecht
Donald & Shirley Volbrecht

Carolyn Waataja
Leroy & Marie Gertgen
Jean Nordstrom

Diane Wells
Blue Cross and Blue Shield of Minnesota

Kathy & Al Woodward
John Woodward

Lindsey Zaubar
William & Darlene Jenison

We sincerely apologize for any errors or omissions. Lifeworks is committed to maintaining an accurate list. If you find an error or omission, please contact us at 651-454-2732.



Amanda Vaubel (left) with JCPenney Human Resources Supervisor Brooke Graves.



BUILDING OUR FUTURE TOGETHER: A CAMPAIGN FOR LIFEWORKS

The following donors helped contribute \$1,000,000 to fund a sustainable future for Lifeworks through the construction of Lifeworks Apple Valley.

BUSINESSES

American Durable
Bayer
City View Electric
Common Sense Building Services
E. G. Rud & Sons
Innovative Office Solutions &
Medcare Products
Industrial Door Co.
Institute of Real Estate Management
KAISERComm
Lampert Architects
Legacy Companies
Maha Inspired Activewear
Northland Paving
Portofino & Associates
R. C. Smith Company
Service Fire Protection
Sonus Interiors
St. Croix Wall Systems
St. Paul Linoleum and Carpet Company
Steenberg-Watrud Construction,
Turner Bros.
University of Minnesota College of
Design Landscape Architecture
Wheeler Hardware

FOUNDATIONS

Ecolab Foundation
Pohlad Family Foundation
Securian
The Valspar Foundation
Wells Fargo Foundation Minnesota
Xcel Energy Foundation

INDIVIDUALS

Anonymous
John & Michele Abbott
Theophilus Adegbile
Leonora Akers
Karen Albro
Edwin & Madeline Andera
Gary & Donna Anderson
Kenneth & Mary Anderson
Mary Anderson
Mary Andert
Bruce & Cheryl Artmann
David & Sue Astin
Dorothy Bailey & Family of
Linda Holmen
Barbara & Michael Baumann
Sally S. Bean
Lloni & Alan Bebel
Melinda Beckey
Allan & Sheryl Benning

Lois Berman
Eugene Biewen & Noel VanTol
Beth Bird
Richard & Lynn Bisanz
John & Marilyn Bjorklund
David & Gretchen Bonham
Eugene & Nancy Booker
Kit Brady
Alan & Gretchen Bray
Anton & Marlys Brendalen
Kathleen Brockmeier
Kofi Bruce & Amy Christensen-Bruce
Irene Budin
Gregory & Marilyn Buhta
Timothy & Julie Bullock
Don & Lisa Burns
Sarah Burns
Richard & Diane Carigiet
Amy & Ted Carlson
Timothy & Jessica Carlson
Christina Caulkins
Miles & Cheri Cohen Family
Bonnie Collier
David Colwell
Kevin & Katie Conneely
Lonnie & Darleen Cooper
Jeffrey Cooper & James Grimes
Jeanne Crowe
Jake & Maureen Czapiewski
Stephen Daas

1965-2015

Myron & Frances Danielson
Julie Darlington
Cynthia Davies
Dennis & Delores Deppa
Joyce DeVries
Rick & Debra Dott
Max & Suzanne Duckler
Ehtaw & Julee Dwe
Jamie Ehlert & Gene Han
Kathy Eich
Curt & Helen England
Roderick & Joan Erchul
Mr. & Mrs. John L. Fesler
Michael Finn
Mr. & Mrs. Donald Finnerty
Patrick & Marlene Flynn
William & Joan Gacki
Mark & Denise Geldernick
Ellen Gelking
Norma Gerrits
Vicki Gerrits
Emily Giannobile
John & Dorothy Gockowski
Marge Goldberg
Richard & Janie Goodspeed
Helen Graham Davies
Forrest Green & Tamera Loring
Patricia Grode
Michael & Roberta Groth
James & Joyce Grotjohn
Gary & Karen Grundy
Roy & Michelle Hafund
Thomas & Monica Hammersten
Jennifer Harmon
Lisa Hart
Duane & Susan Harves
Evan & Kit Henspeter
Nicolette Herbst
Mary Hexom
Steven & Susan Horejsi
Connie Ho's Family
Michael & Patricia Houston
Christopher & Veria Huerta
Arthur & Dorothy Janota
Ralph & Mary Jelinski
Bruce & Janet Johnson
Bruce & Jean Johnson
Debra Johnson
Richard & Linda Kehneman
Frank & Cindy Kerr
Martin & Greta Kiener
Eugene & Judith Kimmes
Lawrence & Mary Ann Kimmes
John & Tamara Kinsella
Richard & Rita Kinsella
Robert & Alexandra Klas
Thomas & Ann Klein
Chris Klug
Jack & Carol Kovala
Sharon Kraft
The Krawczyk Family
Harlan & Gloria Kremer
Betty Kruse & Jenny Horner

Mariann Kukielka
David & Wendy Kunz
John LaDuke
Stephen & Susan Lang
Tyler & Tawnie Langenfeld
Christine Larsen & Scott Peterson
Kent W. Larson & Christine
M. Podas-Larson
Kathryn A. Lawler
David & Lawrene Ledgerwood
Mary & Michael Lenertz
Pat Lillehei
Arnold & Doris Lindberg
Susan Luke
Maurita Lundmark
Scott & Jill Lutgens
Judy Lysne & Alex Petterson
Magnus & Junice Lysne
Catherine Mahone
Gordon & Carol Manchester
Howard & Joyce Mangels
Beverly Marlow
Larry & Patricia Matson
John & Virginia McCain
Laura & Jim McCaul
Regina McNearney
Daniel & Lynn McWhorter
Zachary & Karen Meyer
Ernest Moen
Tamara Molde
Anne Moran
Robert & Joanne Neis
Raymond & Aili Nelson
Robert Nelson
Robert & Ann Niedringhaus
Jean Nordstrom
Joel & Dorothy Oberpriller
Brian & Deborah Ochetti
Benjamin Olson
Steven & Sue Olson
John & Kathleen Orner
Robert Parkhill & Dennice Briol
Michael & Jodi Pieschel
David & Karen Pietsch
Robert & Pamela Platz
Marlys Pritchard
Dan & Laura Purfeerst
Joseph & Frieda Rabaglia
Robert & Kathleen Radspinner
Harry Ray II
Angela & Luke Reisdorf
Sara Reisdorf
Walter & Mary Jo Roberts
Todd & Christine Roth
Leroy Rother
Richard & Barbara Roy
Marie Rutz
Thomas & Gwen Ryan
Tony J. Saputo-Swanson
John & Karen Schamber
Paul & Julie Schnell
Alina Schroeder
Fred & Alice Seagren

Suzanne & Paul Shute
Joseph & Jean Sierra
Ginger Sisco
Larry & Barbara Sly
Cynthia Jo Smith
James & Janice Smith
Joseph & Cynthia Smith
Gary & Susan Soule
Marjorie Spanjers
Mark & Terry Steege
Shirle Stevens
Kelly Stowell
Mark & Susan Sturm
John & Arlene Thomas
Mari Taffe & Kurt Thompson
Dick & Pam Thorsen
Sean & Liv Trenary
Susan Trunk
John & Kathleen Ann Tyler
Frederick & Mary Urch
Ken & Sharon Vagts
Jeanne Vahlsing
Daniel & Kay Van Lanen
Kathleen Vella
Donald & Shirley Volbrecht
Nathan & Roberta Volz
Elwyn & Barbara Wang
Victor & Karen Wells
Ryan Weston
Peter & Nancy White
Gail Willox
Andrew Wondra
Albert & Kathleen Woodward
Bruce & Tayna Yerkes
Sharon & Mark Zauhar



Right: Mikaela Johnson smiles after winning a contest for an adaptive bicycle courtesy of Allianz Life Insurance Company of North America.

LEADERSHIP

Judy M. Lysne
President and CEO

John R. Cobb
Vice President of Human Resources

Christopher C. Huerta
Vice President of Operations

Mary B. Lenertz
Vice President of Services and Government Affairs

Kim K. Mueller
Vice President of Employment Services

Laura A. Purfeerst
Vice President of Finance

Tony J. Saputo-Swanson
Vice President of Advancement

LIFEWORKS 2015 BOARD OF DIRECTORS

John E.Q. Orner
Board Chair
Vice President, Treasurer and Investment Officer
Blue Cross and Blue Shield of Minnesota

Barbara A. Baumann
Past Board Chair
Second Vice President
Securian Financial

Christine M. Larsen
Board Secretary
Vice President Global Safety, Health and Environment
Ecolab

Kofi A. Bruce
Board Treasurer
Vice President, Treasurer
General Mills

Judy M. Lysne
President and CEO
Lifeworks Services

John S. Abbott
President
Varistar
Senior Vice President
Otter Tail Corporation

Theodore R. Carlson
Owner
Carlson Commercial

Gary L. Grundy
Consultant, mentor, and author of
The Fifth Breakthrough

Martin P. Kiener
Senior Account Executive
Mid-America Business Systems

Catherine A. Mahone
Chief Administrative Officer
Allianz Life Insurance Company of North America

Zachary J. Meyer
Senior Vice President, Wellbeing & Employee Assistance Programs
OptumHealth

Frederick M. Seagren
Retired Owner and President,
Business and Technology Consultants, Inc.

Albert A. Woodward
Retired Attorney
Stinson Leonard Street, LLP

1965-2015

THERE ARE MANY WAYS TO DONATE TO LIFEWORKS.

DONATE ONLINE

Visit lifeworks.org and use our secure web site to make your donation.

MAIL YOUR GIFT

Use the enclosed donation envelope to mail in your check or credit card donation.

BECOME A PLANNED GIFT DONOR

Join the Lifeworks Legacy Club and name Lifeworks as a beneficiary in your will, life insurance policy, retirement account, or trust arrangement. Call us at 651-365-3743 to learn more about planned giving.

UNITED WAY AND LIFEWORKS

Write 'Lifeworks' and our address on your United Way pledge form or gift-designation card, and Lifeworks will be the recipient of your United Way contributions.

THANK YOU FOR YOUR CONTINUED GENEROSITY!



Lifeworks Services, Inc. is CARF accredited.

CARF stands for Committee on Accreditation of Rehabilitation Facilities. Accreditation allows Lifeworks to provide a broader range of employment services to individuals with disabilities.

PRINTING AND PAPER

Special thanks to Thomson Reuters whose generosity made this report possible.
www.thomsonreuters.com

Lifeworks